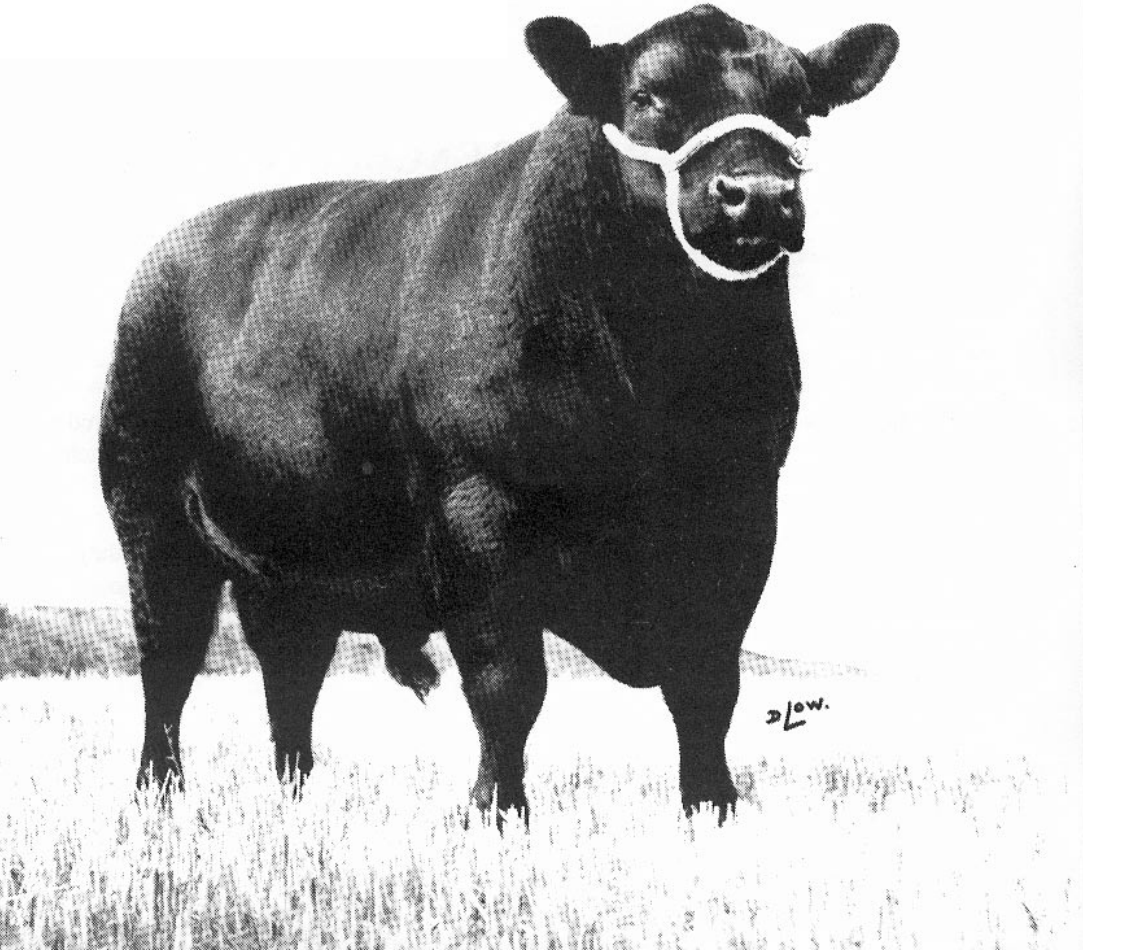


# ABERDEEN- ANGUS



*notes on judging*

**STANDARDS OF EXCELLENCE  
OF  
ABERDEEN-ANGUS CATTLE**

The following Standards of Excellence of Aberdeen-Angus cattle have been prepared by a Committee appointed by Council and, together with the accompanying Outline Sketches, have been revised and approved by Council.

It is not claimed that the Sketches are representations of perfect animals, but they are published with the object of fixing attention on the salient points referred to in the Standards.

# The Judging of Breeding Stock

THE following is designed to act as a guide. It is recognised, however, that the methods suggested may differ in some respects from those employed by certain experienced judges whose techniques may be equally suitable.

Before starting to judge a class, it is essential to have a mental picture of the ideal for the class, and age group of the animals concerned. The following procedure is suggested for use in the judging ring.

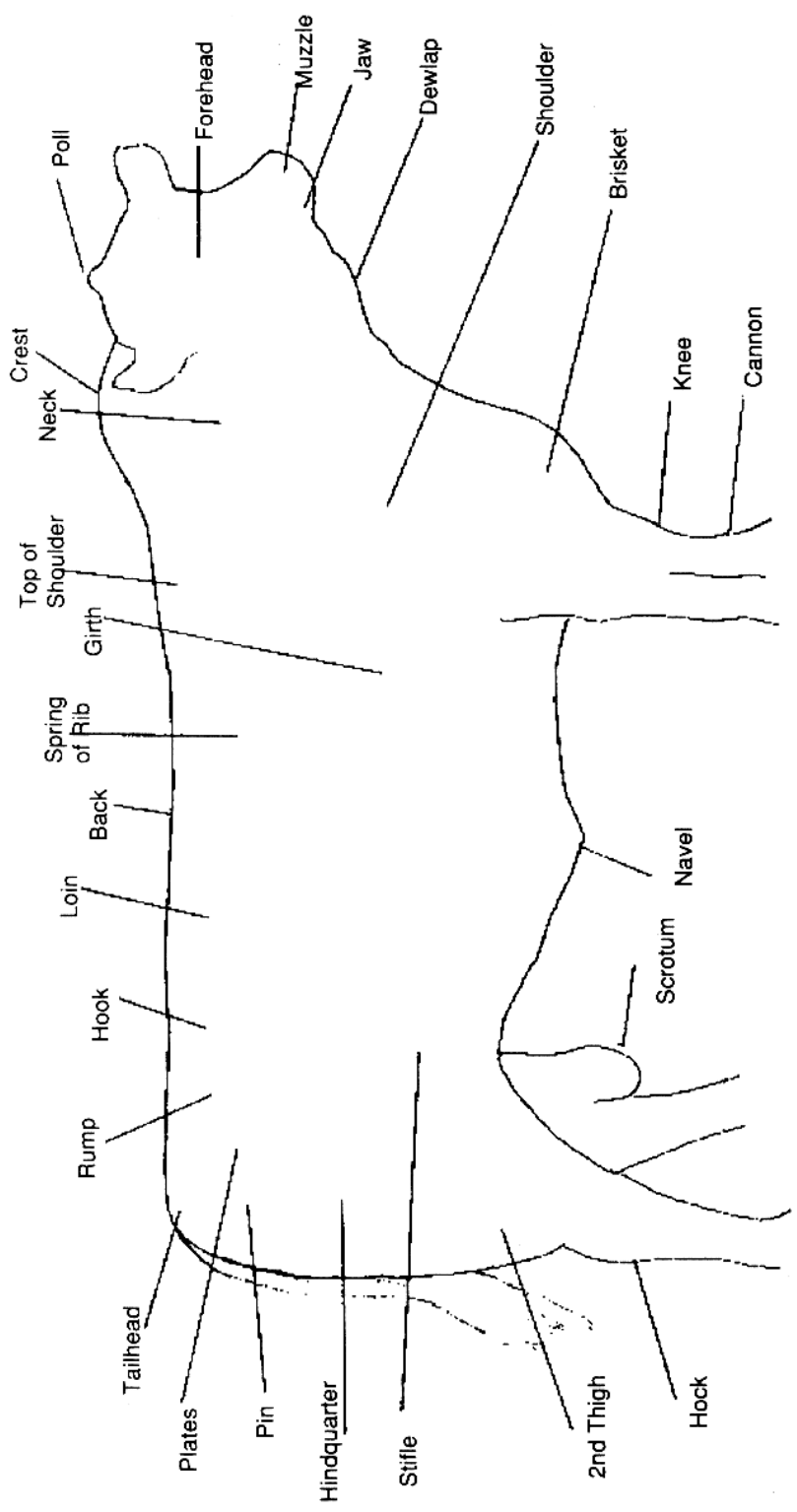
1. Inspect the animals to be judged from a distance, if possible, of at least 20 feet, while the animals are on the move.

Get an overall impression of how far the individual animals conform to breed type. Note the degree of masculinity or femininity. Notice whether each animal is bright and alert in temperament, rather than dull and listless. See whether each walks correctly and whether the feet are sound. Note whether each is “Well put together” and symmetrical. Make a comparative appraisal of the animals as a whole and form a preliminary opinion of their order of merit.

2. Line the animals up either in a provisional order of merit or in the order in which they came into the ring. Alternatively, where large numbers may be involved, it may be preferable to select a short leet and send the remainder out of the ring.

Proceed with a detailed inspection of each animals, judging the relative merits in relation to the approved breed points. In doing so, it is advisable to follow a methodical sequence, for example, in each case beginning at the head and working towards the tail. At the same time, carry out such handling as may be necessary in order to assess the standard of the flesh and the condition of the skin, etc.

3. Make any necessary revision of the placing and, if in doubt, parade two or more animals for comparison.
4. Parade the animals again round the ring in order to see whether the same type has been followed throughout the class. Decide upon any adjustments which appear necessary and line the class up, preferably in the final order of merit.



# Standards of Excellence

Item	Breed Requirements or Characteristics	Objectionable
<b>Appearance</b>	Masculine in Male, Feminine in Female. Elegant, pleasing to the eye. Alert, vigorous on parade.	Male showing Female characteristics. Female showing Male characteristics. Dull, listless.
<b>Action</b>	Straight, correct.	Stiff, ungainly, walking wide behind with incorrect action.
<b>Form</b>	Balanced on all four legs and feet, with adequate length of body and wide hindquarters.	
<b>Colour</b>	Black. Red permissible. White acceptable in minor degree below underline and behind navel.	White scrotum, white in front of navel.
<b>Skin</b>	Loose, moderate thickness, pliable.	Tight or overthick.
<b>Coat</b>	Hair soft and mossy, seasonally abundant.	Hair hard, wiry.
<b>Size</b>	Well developed for age.	Small for age.
<b>Flesh</b>	Deep, smooth, firm.	Patchy or lumpy condition due to external fat.
<b>Head</b>	Masculine and strong in Male. Feminine and more refined in Female. Nostrils wide open. Distance eye to nostril reasonable length.	Masculine in Female. Feminine in Male. Too short.
<b>Muzzle</b>	Broad	“Snipey” or narrow.
<b>Mouth</b>	Wide with correct jaws.	Under or overshot jaws.

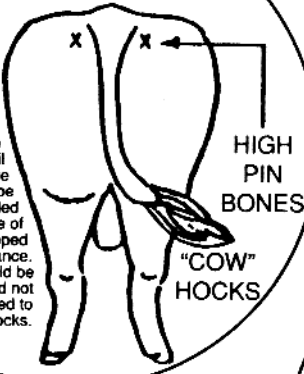
<b>Item</b>	<b>Breed Requirements or Characteristics</b>	<b>Objectionable</b>
<b>Eyes</b>	Clear, full.	Sunken.
<b>Ears</b>	Of good sized, carried high, readily mobile, well covered with hair, fringed on inner rim.	Low set and drooping.
<b>Poll</b>	Clearly defined, complete absence of scurs or rudimentary horns.	Flat crown.
<b>Neck</b>	Medium length, muscular. Crusted in Male, finer in Female.	Extra short neck in Male. Heavy crest in Female.
<b>Dewlap</b>	Clean, without development of loose flesh underneath.	
<b>Brisket</b>	Light.	Heavy Brisket.
<b>Shoulders</b>	Neatly fitted into body.	Prominent shoulder points.
<b>Top of Shoulders</b>	Moderately wide, well covered with flesh.	Narrow, upright.
<b>Forelegs</b>	Correctly placed with a reasonable length of cannon bone, fleshed above knee.	Abnormally short.
<b>Heart-Girth</b>	Full.	Narrow, pinched girth.
<b>Ribs</b>	Well sprung from backbone, giving adequate depth; well covered with flesh.	Flat Ribs.
<b>Back</b>	Straight, level, well covered with flesh.	Hollow or ached back.
<b>Loin</b>	Well filled.	Weak, hollow, loin.
<b>Hooks</b>	Hook bones well apart, well covered.	Prominent hook bones.

<b>Item</b>	<b>Breed Requirements or Characteristics</b>	<b>Objectionable</b>
<b>Rump</b>	Long from hook bones to pin bones, well covered with flesh.	Narrow, sloping, thinly-fleshed “plates”.
<b>Tail</b>	Tailhead on level with back. Tail a good length.	Short tail.
<b>Hindquarters</b>	Deep, Wide, Full. Buttocks thickly fleshed.	Light “dairy-like” hind-quarters and buttocks “split-up” between legs.
<b>Second Thigh</b>	Fleshed down leg.	
<b>Hind Legs</b>	Well apart, and reasonable length. Slightly bent forward below the hocks with wide hock.	Hocks too straight or overbent.
<b>Underline</b>	Straight as possible.	
<b>Bone</b>	Leg bones broad and clean.	Round or coarse.
<b>Feet</b>	Sound, proportionate size.	Deformities of feet. Turned in or out.
<b>Scrotum (bull)</b>	Both testicles normal in size and position.	Abnormality of testicles.
<b>Udder (cow)</b>	Wide, well attached. Teats medium sized, squarely placed.	Under-developed, blind teats, quarters abnormal or irregular.

Style and character are additional items which should come under consideration in judging or selecting Aberdeen-Angus cattle. Generally, it should be borne in mind that the choicest and most valuable cuts are those lying above and behind an imaginary line drawn from the thighs to the top of the shoulders. Length of body ensures higher live weight and a higher proportion of carcass to live weight. As regards bone, the animal needs to have reasonably strong bone in order to carry a high proportion of flesh. Too fine bone, though associated with early maturity, tends to result in lack of size, together with a lower proportion of lean meat.

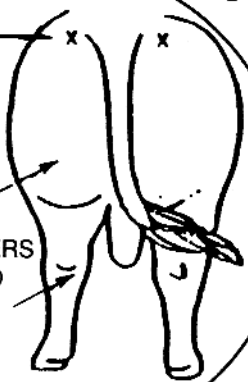
**"HIPPIY" CONCEPT  
PROTRUDING HIPS**

From the rear the hindquarter should be nicely rounded with no hip protrusion. The pin bones should be well apart and there should be a neat tail setting. The whole appearance should be one of long, well filled muscles – not one of short over-developed appearance. Hind legs should be well apart and not close – referred to as cow hocks.



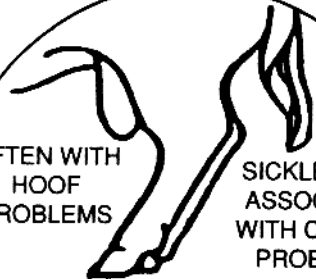
**X**

LOWER  
PIN  
BONES  
  
ROUND  
HINDQUARTERS  
AND GOOD  
HOCKS



✓

OFTEN WITH  
HOOF  
PROBLEMS

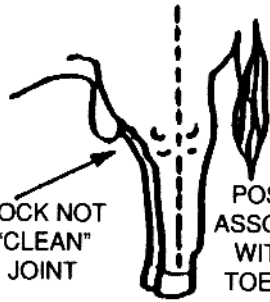


SICKLE HOCK  
ASSOCIATED  
WITH CERTAIN  
PROBLEMS

Sickle hocks unless extreme are tolerated as they are "safe". In extreme cases you can find weak pasterns which often touch the ground when the animal walks. This must be considered undesirable.

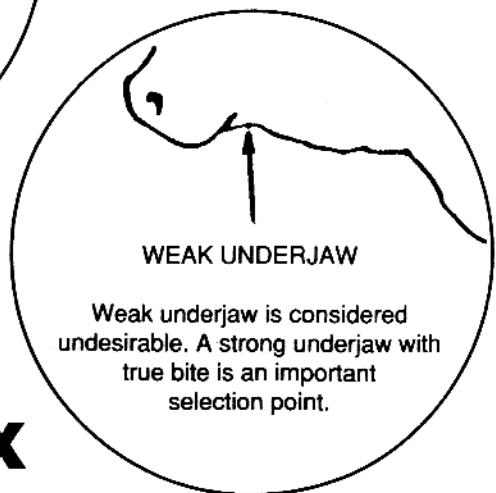
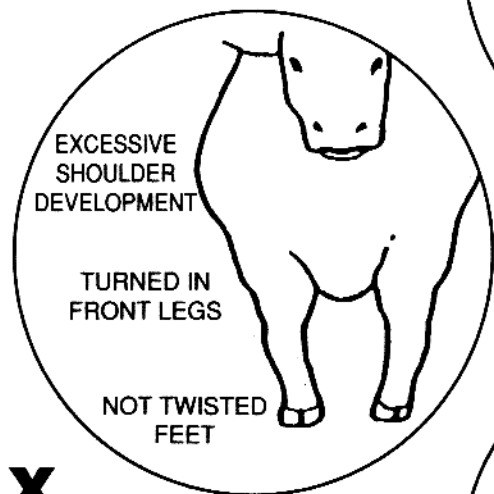
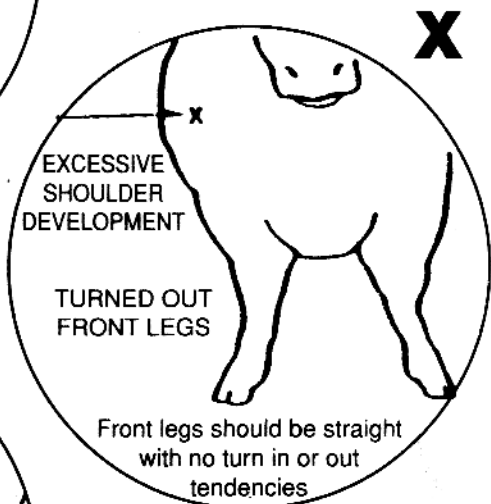
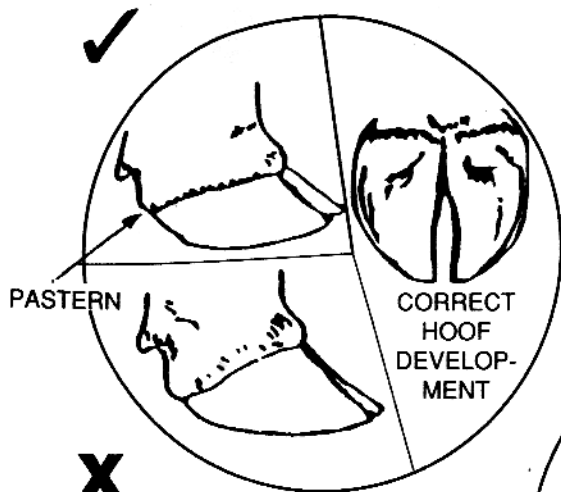
**X**

HOCK NOT  
"CLEAN"  
JOINT



POST LEG  
ASSOCIATED  
WITH "TIP  
TOE" HOOF

**X**



# The Judging of Prime Stock

In the judging of prime stock the same general procedure may be followed as has been recommended in the judging of breeding stock and, in a general way, the same standards may be applied.

The appearance of a typical animal should present a clean, trim, wide body of good length with a straight top line, clean neck and brisket, well developed, deep hindquarters and carrying an even covering of smooth, firm flesh. Patchiness or evidence of excessive external fat is particularly objectionable. Moreover, it is important to recognise that there is a real difference between good conformation due to maximum development of muscle or lean meat, associated with the right amount of fat, and an apparently good, but false conformation, due largely to an excessive development of fat.

When judging beef beasts, it should be remembered that the most valuable cuts are those lying above and behind a line drawn from just about the animal's hock to the top of the shoulders. Consequently, most attention should be given and most significance attached to the portion of the animal above and behind that line.

Handling plays an even more important part in judging prime stock and should be carried out systematically. With the hand, test the thickness and elasticity of the skin and the amount of flesh over the ribs. Handle along the back and then feel the depth of the flesh over the loin and below the loin (lumbar) vertebrae. Measure the width across the loins and the length of the rump from hop bone to pin bone. Feel the flesh on the rump and the thickness of the flank, then, standing directly behind the animal, handle in order to ascertain if there is a covering of firm, deep flesh over the pin bones.

In brief, a good beef beast should have a high proportion of the best cuts, together with a low proportion of lower quality cuts; no more than a reasonable and necessary amount of bone and, to repeat, an absence of unwanted excessive fat.

The following frame and weight score may be a helpful guide.

## ABERDEN-ANGUS FRAME AND WEIGHT SCORE

Frame Score	13 Mths (400d) Height Weight	14 Months Height Weight	15 Months Height Weight	16 Months Height Weight	17 Months Height Weight	18 Months Height Weight	Weight Score
8	141+ 660	142+ 690	143 <sup>1</sup> / <sub>2</sub> + 720	144 <sup>1</sup> / <sub>2</sub> + 745	146+ 770	147+ 790	8
7	136+ 610	137+ 640	138 <sup>1</sup> / <sub>2</sub> + 670	139 <sup>1</sup> / <sub>2</sub> + 695	141+ 720	142+ 740	7
6	131+ 560	132+ 590	133 <sup>1</sup> / <sub>2</sub> + 620	134 <sup>1</sup> / <sub>2</sub> + 645	136+ 670	137+ 690	6
5	125 <sup>1</sup> / <sub>2</sub> + 510	127+ 540	128 <sup>1</sup> / <sub>2</sub> + 570	129 <sup>1</sup> / <sub>2</sub> + 595	131+ 620	132+ 640	5
4	120 <sup>1</sup> / <sub>2</sub> + 460	122+ 490	123+ 520	124 <sup>1</sup> / <sub>2</sub> + 545	125 <sup>1</sup> / <sub>2</sub> + 570	127+ 590	4
3	115 <sup>1</sup> / <sub>2</sub> + 410	117+ 440	118+ 470	119 <sup>1</sup> / <sub>2</sub> + 495	120 <sup>1</sup> / <sub>2</sub> + 520	122+ 540	3
2	110 <sup>1</sup> / <sub>2</sub> + 360	112+ 390	113+ 420	114 <sup>1</sup> / <sub>2</sub> + 445	115 <sup>1</sup> / <sub>2</sub> + 470	117+ 490	2
	19 Months Height Weight	20 Mths (600d) Height Weight	21 Months Height Weight	22 Months Height Weight	23 Months Height Weight	24 Months Height Weight	
8	148+ 810	148 <sup>1</sup> / <sub>2</sub> + 830	149+ 850	150+ 865	150 <sup>1</sup> / <sub>2</sub> + 880	151+ 895	8
7	143+ 760	143 <sup>1</sup> / <sub>2</sub> + 780	144+ 800	145+ 815	145 <sup>1</sup> / <sub>2</sub> + 830	146+ 845	7
6	138+ 710	138 <sup>1</sup> / <sub>2</sub> + 730	139+ 750	139 <sup>1</sup> / <sub>2</sub> + 765	140 <sup>1</sup> / <sub>2</sub> + 780	141+ 795	6
5	132 <sup>1</sup> / <sub>2</sub> + 660	133 <sup>1</sup> / <sub>2</sub> + 680	134+ 700	134 <sup>1</sup> / <sub>2</sub> + 715	135+ 730	136+ 745	5
4	127 <sup>1</sup> / <sub>2</sub> + 610	128 <sup>1</sup> / <sub>2</sub> + 630	129+ 650	129 <sup>1</sup> / <sub>2</sub> + 665	130+ 680	131+ 695	4
3	122 <sup>1</sup> / <sub>2</sub> + 560	123+ 580	124+ 600	124 <sup>1</sup> / <sub>2</sub> + 615	125+ 630	125 <sup>1</sup> / <sub>2</sub> + 645	3
2	117 <sup>1</sup> / <sub>2</sub> + 510	118+ 530	118 <sup>1</sup> / <sub>2</sub> + 550	119 <sup>1</sup> / <sub>2</sub> + 565	120+ 580	120 <sup>1</sup> / <sub>2</sub> + 595	2

